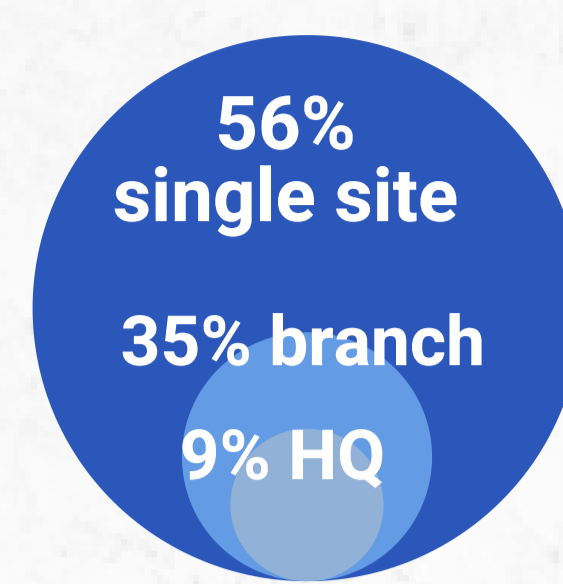
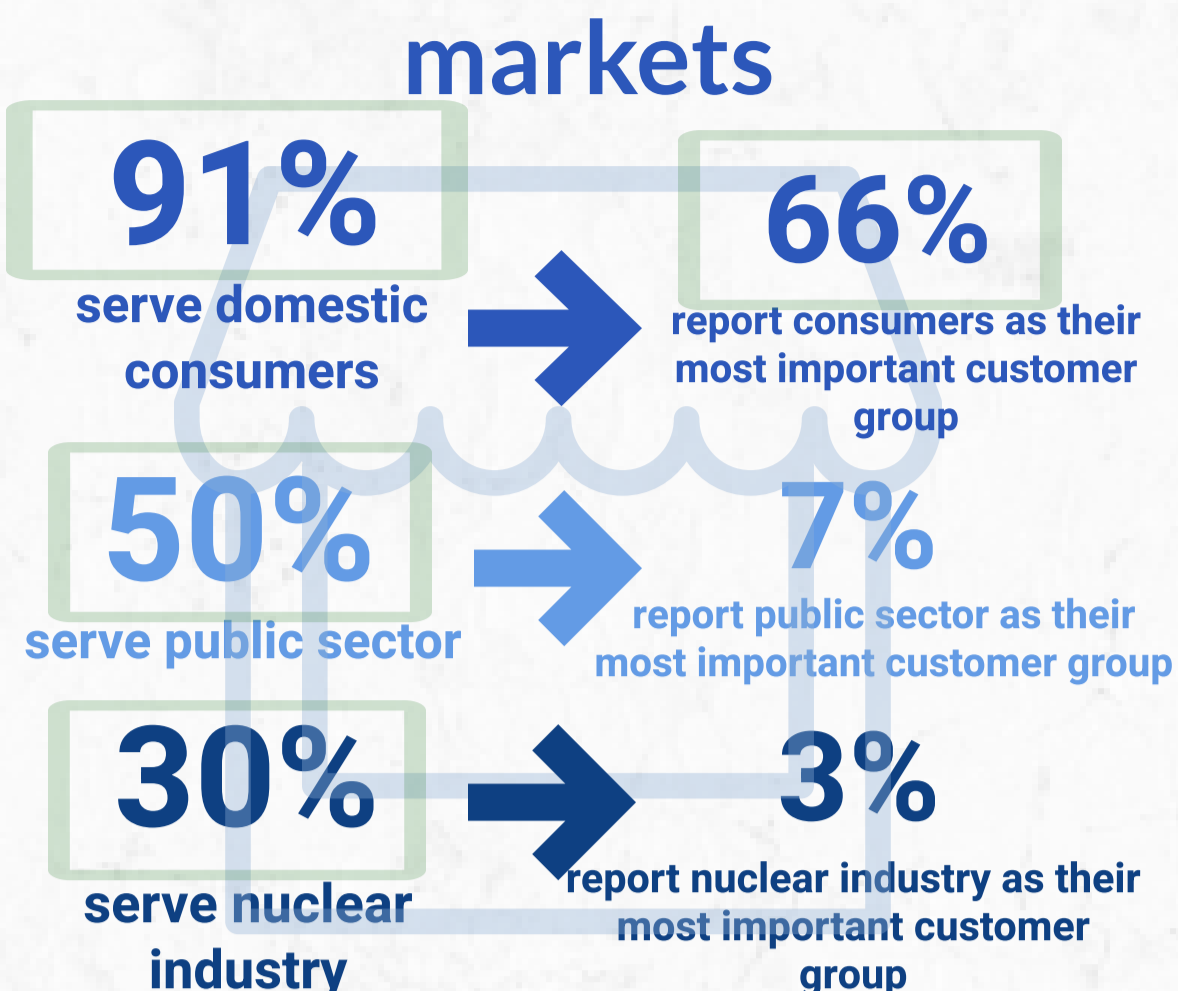
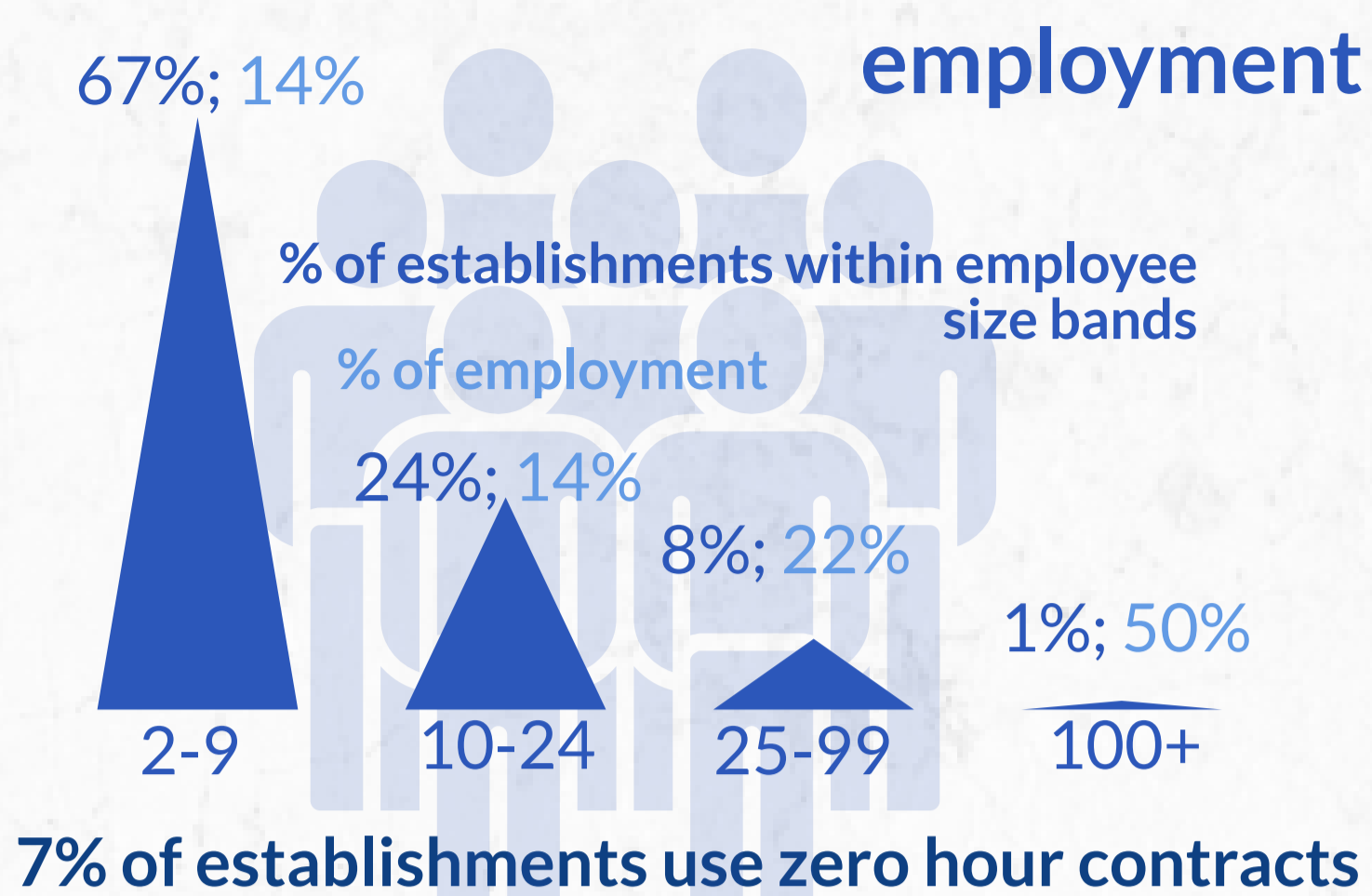


Barrow-in-Furness district Cumbria Business Survey 2020

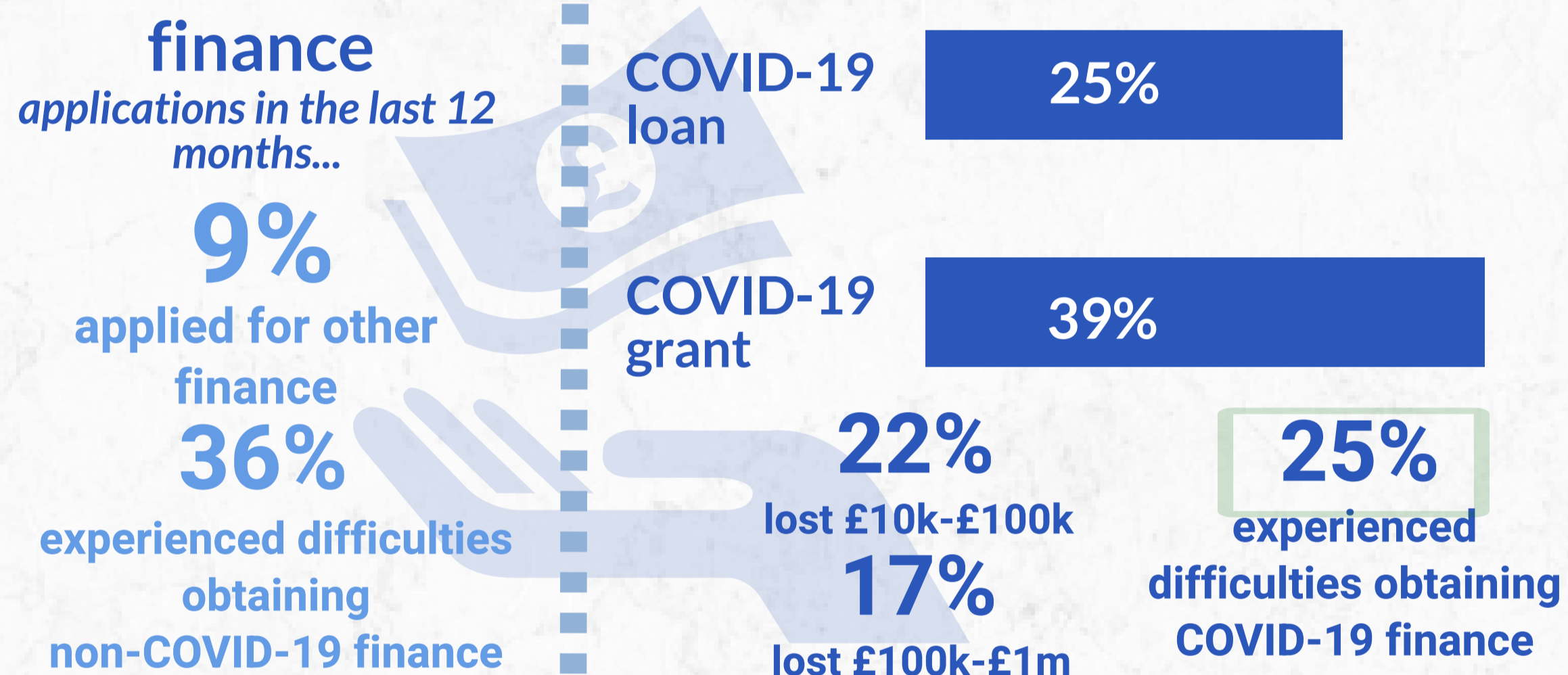
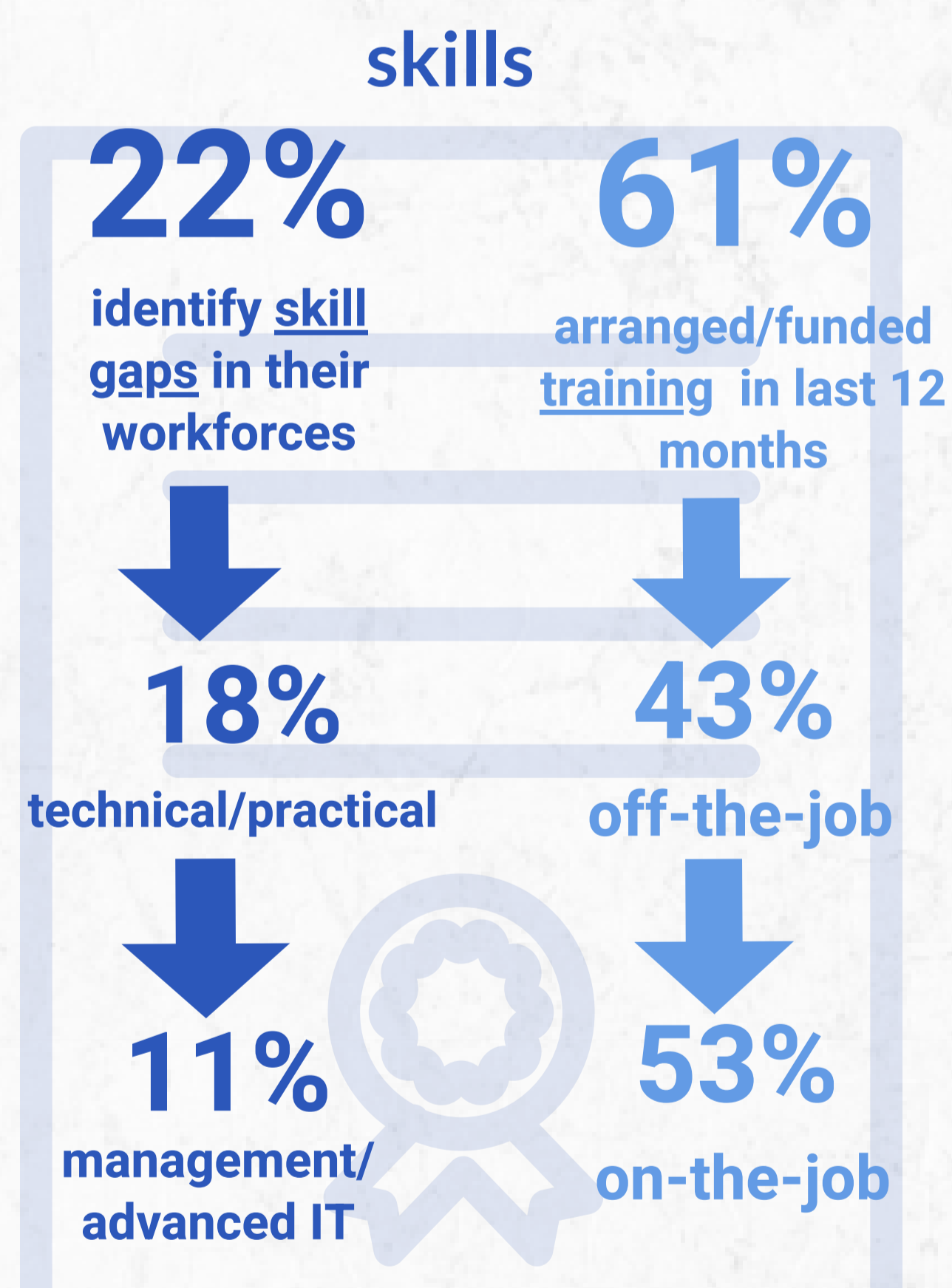
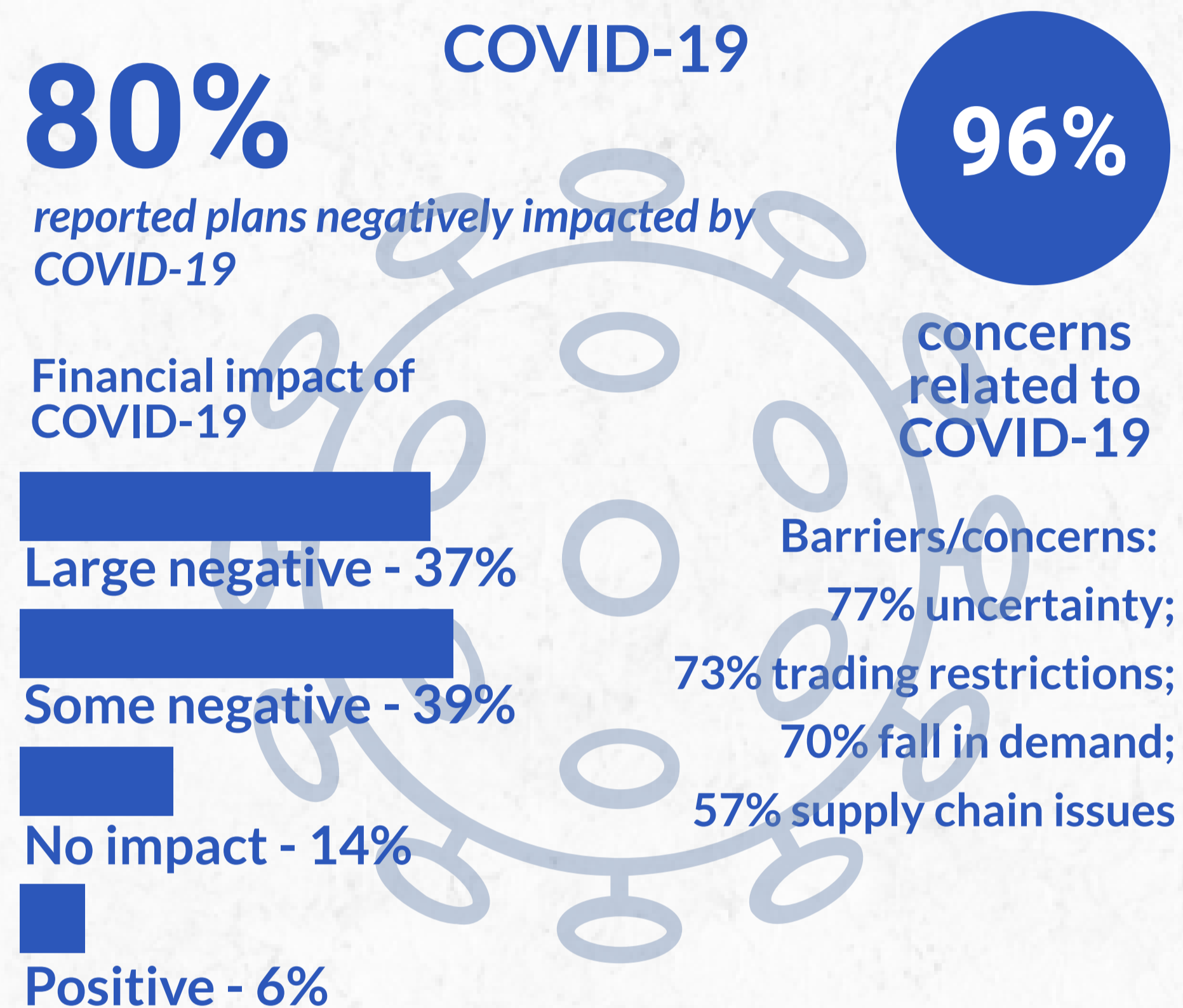
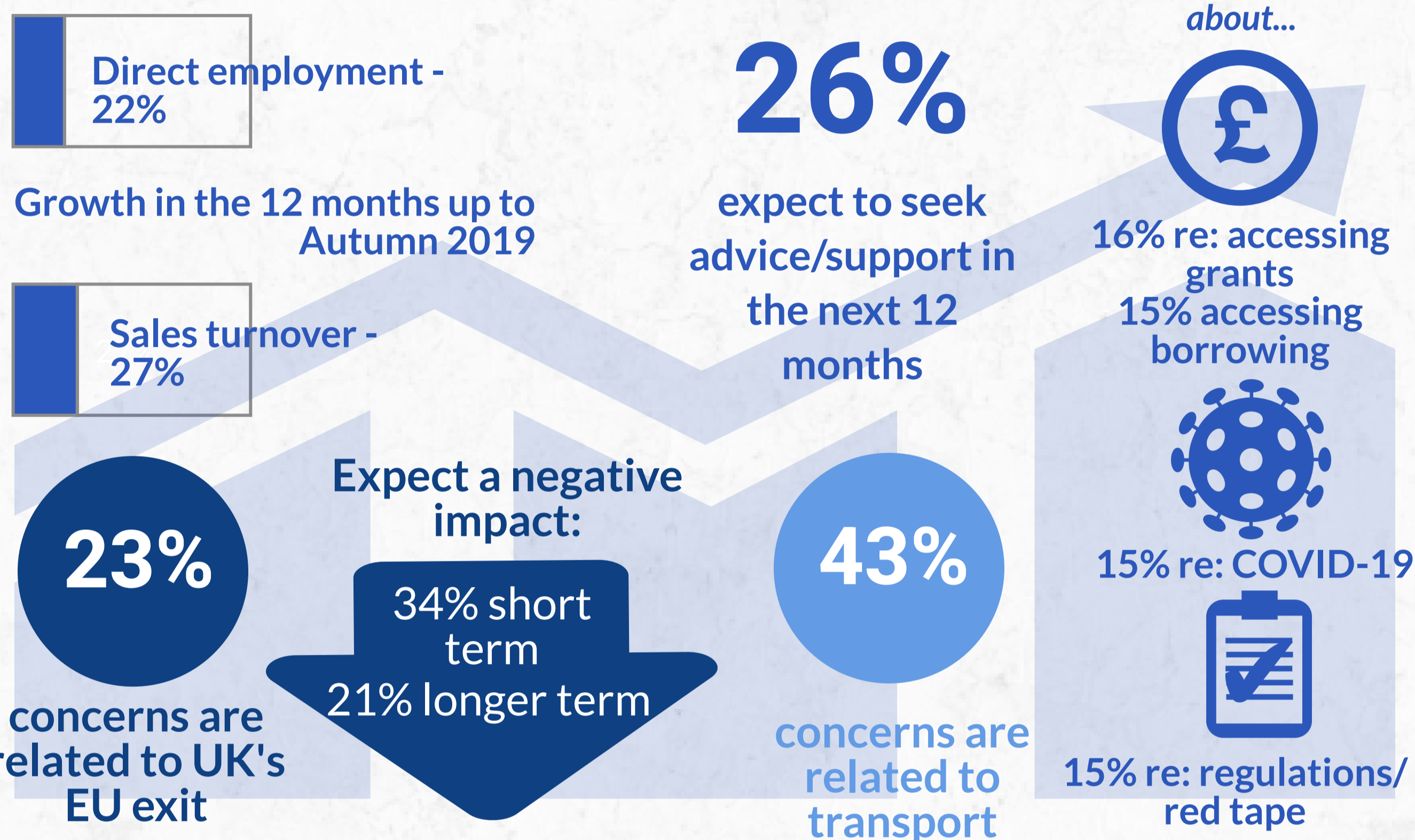
all establishments located outside the LDNP area; 87% within an urban area



26%
of Cumbria's
Advanced
manufacturing
establishments

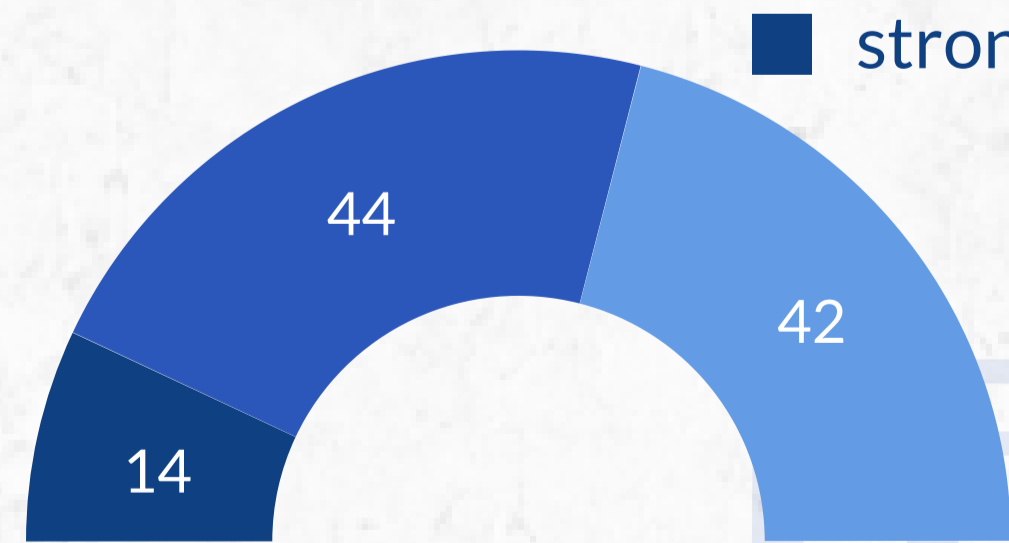
11%
export

Top industries:
Wholesale/retail - 30%
Accommodation/food services - 13%
Other services - 9%

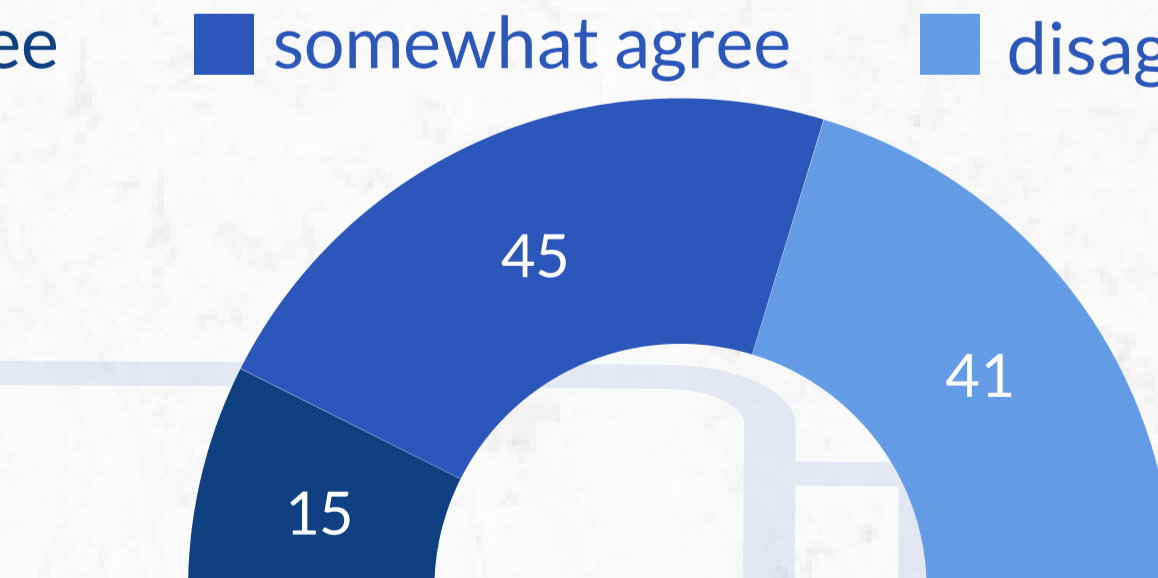


low carbon

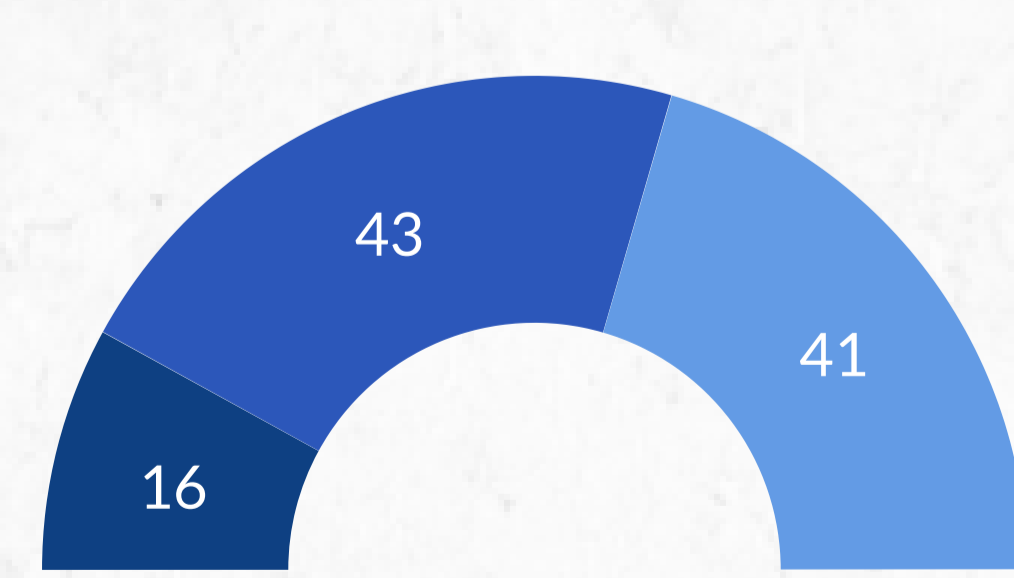
70%
have taken steps to reduce carbon footprint in last year



Businesses should spend more to reduce their impact on the environment



Businesses' environmental impact should be part of the bottom line



Businesses should prioritise protecting environment above profitability or growth

Telephone interviews conducted with private and voluntary/non-profit sector employers between October to December 2020 - site level information. Employer population data source: IDBR August 2020

125

surveys completed

Survey commissioned and managed by Cumbria County Council, supported by Cumbria LEP, the 6 district councils in Cumbria and Cumbria Chamber of Commerce

For more information contact: ginny.murphy@cumbria.gov.uk



BMG

success decoded

green shading - above Cumbria average