

## Special Educational Needs and Disabilities: Joint Strategic Needs Assessment;

### Integrated Care Communities summary

## Contents

1. Introduction .....	2
2. Background .....	2
Integrated Care Communities (ICCs) .....	2
3. Pupils with Special Educational Needs in England 2019; based on postcode of the school..	4
4. Pupils with Special Educational Needs in England 2019; based on postcode of the pupil ....	9
5. Pupils with SEN by Primary Need – North Cumbria.....	11
6. Pupils with SEN by primary need – South Cumbria .....	12
7. Further information .....	13



## 1. Introduction

This JSNA chapter provides a summary of children and young people aged 2-18 years with a special educational need including a learning difficulty and/or disability (SEND), based on the January 2019 School Census, presented at Integrated Care Community (ICC) level. This chapter forms part of the full Special Educational Needs and Disabilities JSNA which is available here: <https://www.cumbriaobservatory.org.uk/jsna/send/> .

## 2. Background

A child or a young person has Special Educational Needs if they have a learning difficulty or disability which requires special educational provision. Children and young people (0-25 years - up to 25<sup>th</sup> birthday) with SEN are entitled to additional support (SEN support) however not all require this. Furthermore, children and young people with SEN (particularly those with complex needs) are entitled to request a needs assessment for an EHC Plan (Education, Health and Care Plan) however, not all children have these depending on their needs.

### Integrated Care Communities (ICCs)

Integrated Care Communities (ICCs) work together to improve the overall health and wellbeing of the community by joining up health and care services. They are made up of health and social care professionals, GPs, the voluntary sector and local community, working as one team to support the health and wellbeing of the local population. There are a total of 13 ICCs in Cumbria (8 in North Cumbria and 5 in South Cumbria). (See Figure 1). *[N.B. Please note that Carlisle Urban ICC area in North Cumbria is split by two groups of GP Practices, these are Carlisle Healthcare and Carlisle Network].*



### 3. Pupils with Special Educational Needs in England 2019; based on postcode of the school

As reported in the January 2019 Census, there are 10,739 pupils (age 2-18years) with Special Educational Needs in Cumbria (all schools), accounting for 14.9% of all pupils, in line with England (14.9%). There are 8,407 pupils in receipt of Special Educational Needs support, accounting for 11.7% of all pupils, similar to the national average (11.9%). 2,332 pupils have an Educational, Health & Care Plan, accounting for 3.2% of all pupils, similar to England (3.1%).

Based on the postcode of the school, a breakdown is provided by Integrated Care Community level in *Tables 1, 2 & 3*.

**Table 1: All schools:** Number of pupils (2-18 years) with SEN (SEN support; and/or Education, Health & Care Plans, by Integrated Care Community; January 2019

ICC	Total pupils	SEN support		EHCP	
		Number	% of all pupils	Number	% of all pupils
North Cumbria					
Carlisle Rural	3,582	485	13.5%	105	2.9%
Carlisle Urban	10,712	1,285	12.0%	331	3.1%
Cockermouth & Maryport	4,784	532	11.1%	129	2.7%
Copeland	8,046	805	10.0%	339	4.2%
Eden	7,200	828	11.5%	156	2.2%
Keswick & Solway	6,725	753	11.2%	122	1.8%
Workington	4,729	640	13.5%	134	2.8%
North Cumbria Total	45,778	5,328	11.6%	1,316	2.9%
South Cumbria					
Barrow & Millom (Barrow only)	7,638	1,017	13.3%	305	4.0%
Barrow & Millom (Millom only)	1,357	217	16.0%	54	4.0%
Central Lakes & Grange	2,972	306	10.3%	131	4.4%
East Lakes	4,746	633	13.3%	176	3.7%
Kendal	5,028	410	8.2%	202	4.0%
Ulverston, Dalton & Askam	4,492	496	11.0%	148	3.3%
South Cumbria Total	26,233	3,079	11.7%	1,016	3.9%
Cumbria					
Total	72,011	8,407	11.7%	2,332	3.2%

Source: Special Educational Needs in England, 2019; Underlying Data; Department for Education. *[Includes all state-funded nursery, primary, secondary; special schools; Pupil Referral Units; and Independent Schools. Includes pupils with dual registration, mainly at PRUs and mainstream settings, therefore the pupil may be counted more than once. Locally calculated estimates based on location of school].*

**Table 2: State funded schools:** Number of pupils (2-18 years) with SEN (SEN support; and/or Education, Health & Care Plans, by Integrated Care Community; January 2019

ICC	Total pupils	SEN support		EHCP	
		Number	%	Number	%
North Cumbria					
Carlisle Rural	3,540	484	13.7%	64	1.8%
Carlisle Urban	10,271	1,232	12.0%	323	3.1%
Cockermouth & Maryport	4,784	532	11.1%	129	2.7%
Copeland	8,046	805	10.0%	339	4.2%
Eden	7,114	828	11.6%	156	2.2%
Keswick & Solway	6,564	734	11.2%	116	1.8%
Workington	4,729	640	13.5%	134	2.8%
North Cumbria Total	45,048	5,255	11.7%	1,261	2.8%
South Cumbria					
Barrow & Millom (Barrow only)	7,638	1,017	13.3%	305	4.0%
Barrow & Millom (Millom only)	1,357	217	16.0%	54	4.0%
Central Lakes & Grange	2,539	255	10.0%	62	2.4%
East Lakes	3,900	544	13.9%	89	2.3%
Kendal	4,998	407	8.1%	180	3.6%
Ulverston, Dalton & Askam	4,492	496	11.0%	148	3.3%
South Cumbria Total	24,924	2,936	11.8%	838	3.4%
Cumbria					
Total	69,972	8,191	11.7%	2,099	3.0%

Source: Special Educational Needs in England, 2019; Underlying Data; Department for Education.  
*[Includes all state-funded nursery, primary, secondary; special schools; and Pupil Referral Units. Locally calculated estimates based on location of school].*

**Table 3: Independent Schools:** Number of pupils (2-18 years) with SEN (SEN support; and/or Education, Health & Care Plans, by Integrated Care Community; January 2019

Education, Health & Care Plans, by Integrated Care Community, January 2016					
ICC	Total pupils	SEN support		EHCP	
		Number	%	Number	%
North Cumbria					
Carlisle Rural	42	1	2.4%	41	97.6%
Carlisle Urban	441	53	12.0%	8	1.8%
Eden	86	0	0.0%	0	0.0%
Keswick & Solway	161	19	11.8%	6	3.7%
North Cumbria Total	730	73	10.0%	55	7.5%
South Cumbria					
Central Lakes & Grange	433	51	11.8%	69	15.9%
East Lakes	846	89	10.5%	87	10.3%
Kendal	30	3	10.0%	22	73.3%
South Cumbria Total	1,309	143	10.9%	178	13.6%
Cumbria					
Total	2,039	216	10.6%	233	11.4%

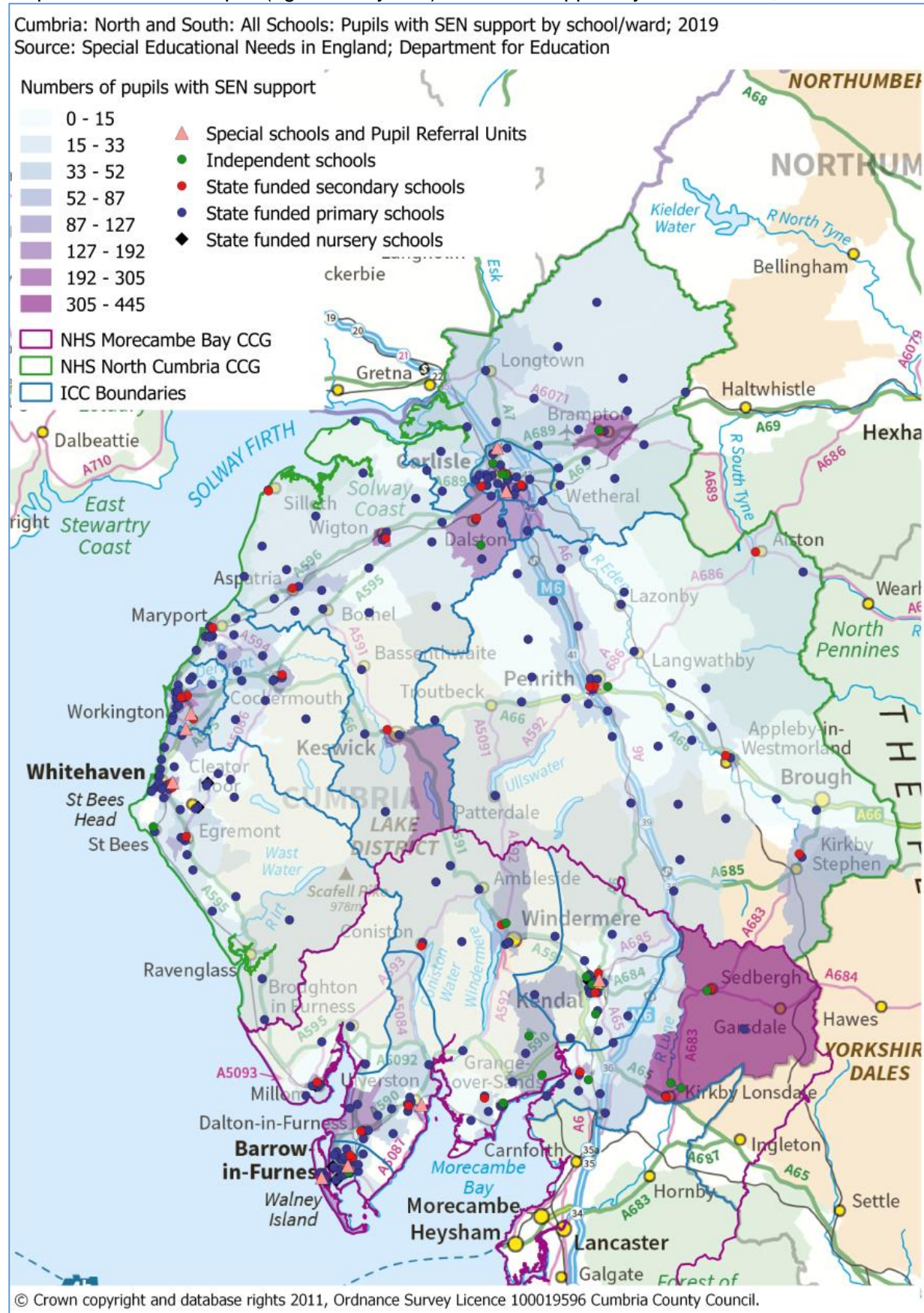
Source: Special Educational Needs in England, 2019; Underlying Data; Department for Education.  
*[Locally calculated estimates based on location of school].*



Based on the location (ward) of the school, the number of pupils with SEN support is presented in Map 2. The wards with the greatest number of pupils with SEN support are: Sedbergh and Kirkby Lonsdale (South Lakeland); Penrith South (Eden); Brampton (Carlisle); Wigton and St. John's (Allerdale).

Based on the location (ward) of the school, the number of pupils with an EHCP is presented in Map 3. The wards with the greatest number of pupils with an EHCP are: Hensingham (Copeland); Belah (Carlisle); Kendal Far Cross (South Lakeland); Sedbergh and Kirkby Lonsdale (South Lakeland); and Walney North (Barrow-in-Furness).

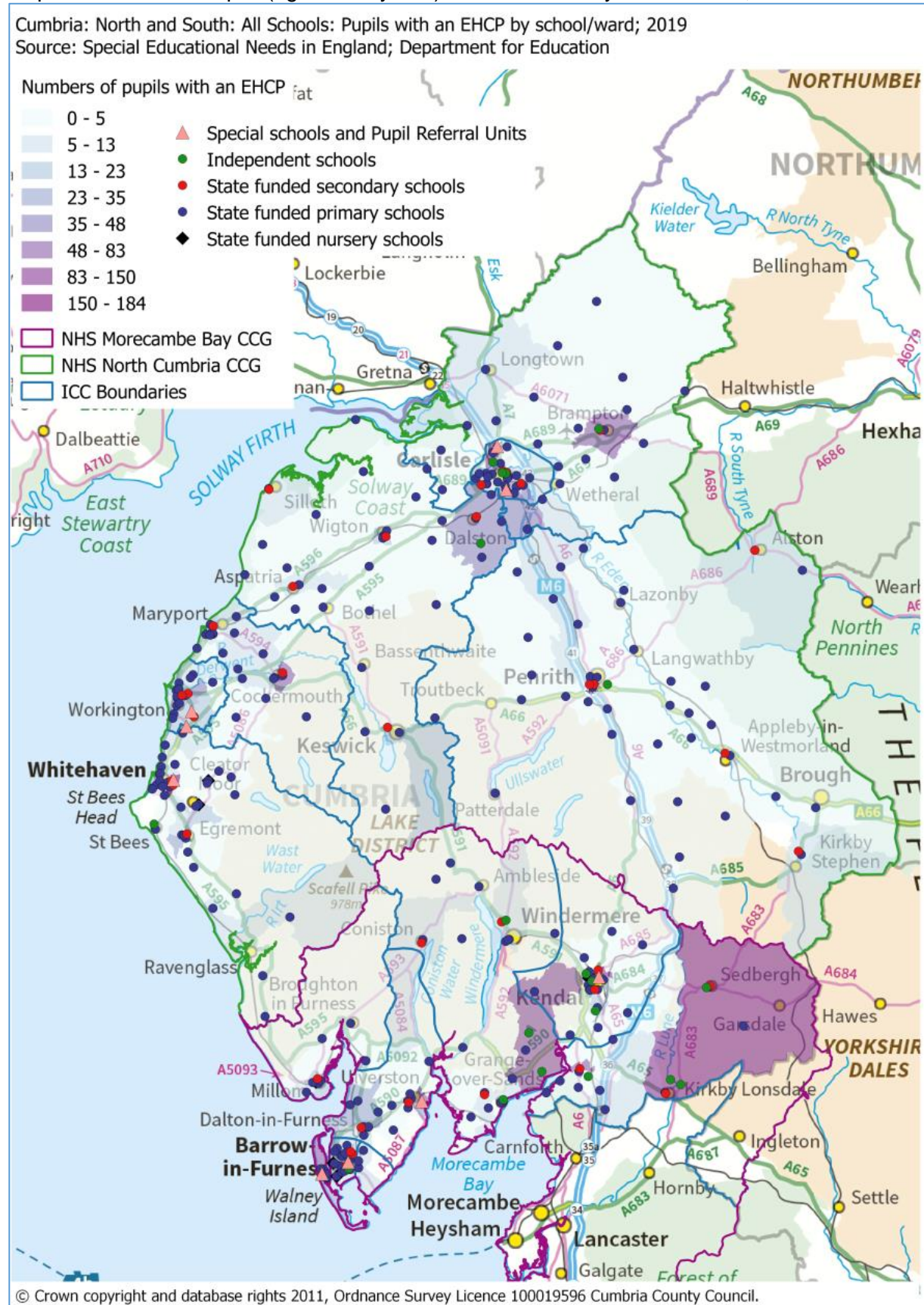
Map 2: All schools: Pupils (aged 2-18 years) with SEN support by school/Ward; 2019



Source: Special Educational Needs in England 2019; Underlying Data; Department for Education



Map 3: All schools: Pupils (aged 2-18 years) with an EHCP by school/Ward; 2019



Source: Special Educational Needs in England 2019; Underlying Data; Department for Education



#### 4. Pupils with Special Educational Needs in England 2019; based on postcode of the pupil

Based on postcode of the pupil, as reported in the January 2019 Census, there are 10,326 pupils (age 2-18years) with Special Educational Needs in Cumbria (excludes Independent schools). There are 8,214 pupils in receipt of Special Educational Needs support, and 2,112 pupils with an Education, Health & Care Plan. A breakdown is provided by Integrated Care Community level in *Table 4*.

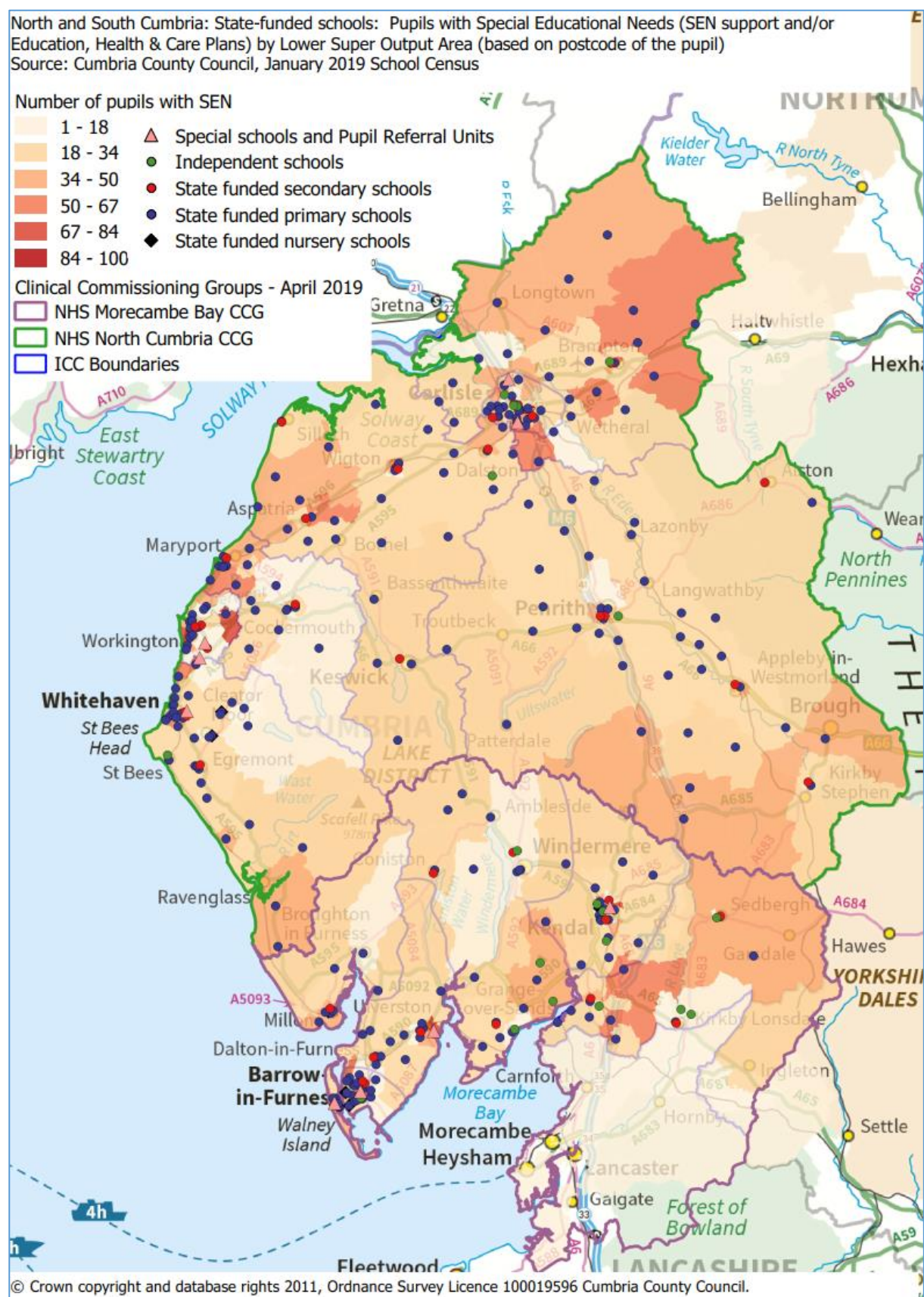
**Table 4: State-funded schools:** Number of pupils (2-18 years) with SEN (SEN support; and/or Education, Health & Care Plans) by Integrated Care Community; January 2019

ICC	SEN support	EHCP	SEN Total	SEN Total (%)
<b>North Cumbria</b>				
Carlisle Rural	446	69	515	5.0%
Carlisle Urban	1,360	302	1,662	16.1%
Cockermouth & Maryport	542	127	669	6.5%
Copeland	890	313	1,203	11.7%
Eden	812	181	993	9.6%
Keswick & Solway	575	118	693	6.7%
Workington	640	165	805	7.8%
North Cumbria Total	5,265	1,275	6,540	
<b>South Cumbria</b>				
Barrow & Millom (Barrow only)	1,043	327	1,370	13.3%
Barrow & Millom (Millom only)	220	59	279	2.7%
Central Lakes & Grange	279	81	360	3.5%
East Lakes	277	60	337	3.3%
Kendal	421	153	574	5.6%
Ulverston, Dalton & Askam	451	117	568	5.5%
South Cumbria Total	2,691	797	3,488	
Out of County	258	40	298	2.9%
<b>Cumbria</b>				
Total	8,214	2,112	10,326	

Source: Cumbria County Council, January 2019 School Census [Locally calculated estimates based on pupil postcode. Numbers may not sum due to unmatched postcodes].

Based on the postcode of the pupil, the number of pupils in state-funded schools with SEN (both SEN support and/or an Education, Health & Care Plan) is presented in Map 4.

Map 4: State-funded schools: pupils (aged 2-18 years) with SEN by Lower Super Output Area



Source: Cumbria County Council. [Based on postcode of the pupil; Excludes Independent schools].

## 5. Pupils with SEN by Primary Need – North Cumbria

Based on the postcode of the school (state-funded schools), a breakdown of the number of pupils with SEN by their primary need is provided by Integrated Care Community level in Table 5.

**Table 5: North Cumbria: State-funded schools: Number of pupils with SEN by primary need**

	North Cumbria ICCs						
	Carlisle Rural	Carlisle Urban	Cockermouth & Maryport	Copeland	Eden	Keswick & Solway	Workington
Specific Learning Difficulty	172	307	148	136	275	199	107
Moderate Learning Difficulty	41	209	113	148	155	146	84
Severe Learning Difficulty	11	78	8	148	16	9	12
Profound & Multiple Learning Difficulty	2	32	4	22	4	4	3
Social, Emotional and Mental Health	64	231	61	89	136	127	156
Speech, Language and Communications Needs	62	280	64	143	156	92	160
Hearing Impairment	9	20	4	6	19	18	10
Visual Impairment	3	10	3	10	13	13	7
Multi-Sensory Impairment	1	4	1	0	1	0	0
Physical Disability	29	33	12	23	43	29	27
Autistic Spectrum Disorder	23	101	118	222	50	59	79
Other Difficulty/Disability	35	122	26	85	59	67	84
Total	452	1,427	562	1,032	927	763	729

Source: Special Educational Needs in England, 2019; Underlying Data; Department for Education  
[Includes all state-funded nursery, primary, secondary, special schools and Pupil Referral Units; excludes Independent Schools (data not available). Based on location of school].

Based on the postcode of the pupil, a breakdown of the number of pupils with SEN by their primary need is provided by Integrated Care Community level in Table 6.

**Table 6: North Cumbria: State-funded schools: Number of pupils with SEN by primary need**

	North Cumbria ICCs						
	Carlisle Rural	Carlisle Urban	Cockermouth & Maryport	Copeland	Eden	Keswick & Solway	Workington
Specific Learning Difficulty	160	333	145	153	276	165	116
Moderate Learning Difficulty	45	221	109	161	155	112	87
Severe Learning Difficulty	16	59	36	93	29	18	37
Profound & Multiple Learning Difficulty	*	24	8	11	10	*	10
Social, Emotional and Mental Health	59	253	77	125	128	112	123
Speech, Language and Communications Needs	57	299	68	155	157	69	155
Hearing Impairment	10	22	*	6	16	15	10
Visual Impairment	*	11	6	14	13	7	8
Multi-Sensory Impairment	*	*	*	*	*	*	7
Physical Disability	23	48	12	30	41	18	25
Autistic Spectrum Disorder	27	94	82	250	54	51	95
Other Difficulty/Disability	24	143	32	92	57	47	88



No specialist assessment of type of need (NSA)	85	151	88	113	56	75	51
Total	515	1,662	669	1,203	993	693	805

Source: Cumbria County Council, January School Census, 2019. *[Based on pupil postcode. Numbers below 5 are suppressed].*

## 6. Pupils with SEN by primary need – South Cumbria

Based on the postcode of the school, a breakdown of the number of pupils with SEN by their primary need is provided by Integrated Care Community level in Table 7.

**Table 7: South Cumbria: State-funded schools: Number of pupils with SEN by primary need**

	South Cumbria ICCs					
	Barrow & Millom (Barrow only)	Barrow & Millom (Millom only)	Central Lakes & Grange	East Lakes	Kendal	Ulverston, Dalton & Askam
Specific Learning Difficulty	142	62	70	259	120	192
Moderate Learning Difficulty	146	50	35	51	48	73
Severe Learning Difficulty	59	0	4	4	39	32
Profound & Multiple Learning Difficulty	14	1	3	4	11	12
Social, Emotional and Mental Health	153	37	28	58	72	63
Speech, Language and Communications Needs	296	41	48	54	134	86
Hearing Impairment	21	2	6	23	8	5
Visual Impairment	5	6	6	1	9	3
Multi-Sensory Impairment	3	0	2	2	3	0
Physical Disability	16	2	3	11	12	22
Autistic Spectrum Disorder	88	47	36	76	50	72
Other Difficulty/Disability	67	9	17	50	67	49
Total	1,010	257	258	593	573	609

Source: Special Educational Needs in England, 2019; Underlying Data; Department for Education. *[Includes all state-funded nursery, primary, secondary, special schools and Pupil Referral Units; excludes Independent Schools (data not available). Based on location of school].*

Based on the postcode of the pupil, a breakdown of the number of pupils with SEN by their primary need is provided by Integrated Care Community level in Table 8.

**Table 8: South Cumbria: State-funded schools: Number of pupils with SEN by primary need**

	South Cumbria ICCs					
	Barrow & Millom (Barrow only)	Barrow & Millom (Millom only)	Central Lakes & Grange	East Lakes	Kendal	Ulverston, Dalton & Askam
Specific Learning Difficulty	164	56	95	117	123	164
Moderate Learning Difficulty	147	54	28	20	53	68
Severe Learning Difficulty	68	5	14	10	16	17

Profound & Multiple Learning Difficulty	16	*	7	*	7	7
Social, Emotional and Mental Health	151	38	29	45	77	63
Speech, Language and Communications Needs	301	39	58	41	121	78
Hearing Impairment	20	*	7	12	9	6
Visual Impairment	*	*	*	*	9	*
Multi-Sensory Impairment	*	*	*	*	*	*
Physical Disability	20	*	*	7	12	20
Autistic Spectrum Disorder	98	50	35	22	60	61
Other Difficulty/Disability	72	10	20	29	68	43
No specialist assessment of type of need (NSA)	306	19	55	29	16	37
Total	1,370	279	360	337	574	568

Source: Cumbria County Council, January School Census, 2019. *[Based on pupil postcode. Numbers below 5 are suppressed].*

## 7. Further information

Special Educational Needs and Disabilities Joint Strategic Needs Assessment:

<https://www.cumbriaobservatory.org.uk/jsna/send/>

Special Educational Needs in England; January 2019:

<https://www.gov.uk/government/statistics/special-educational-needs-in-england-january-2019>

Underlying data: Special educational needs in England - January 2019:

<https://www.gov.uk/government/statistics/special-educational-needs-in-england-january-2019>