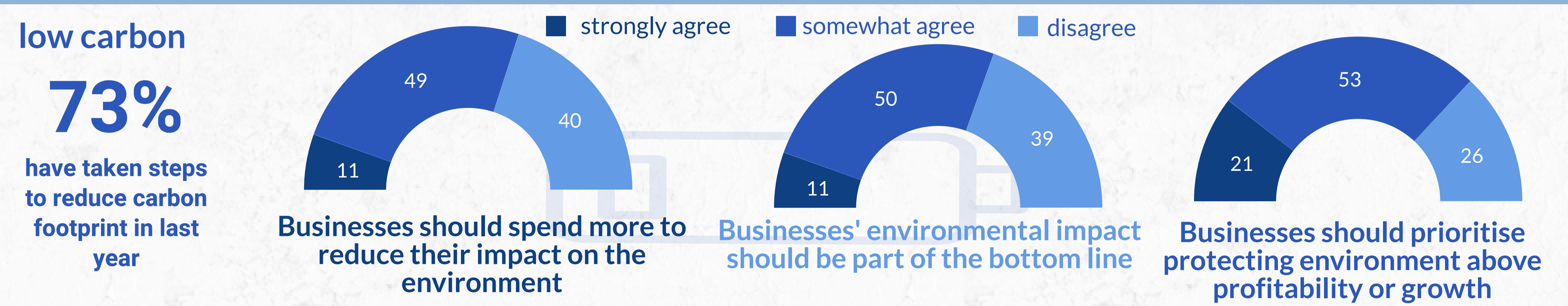
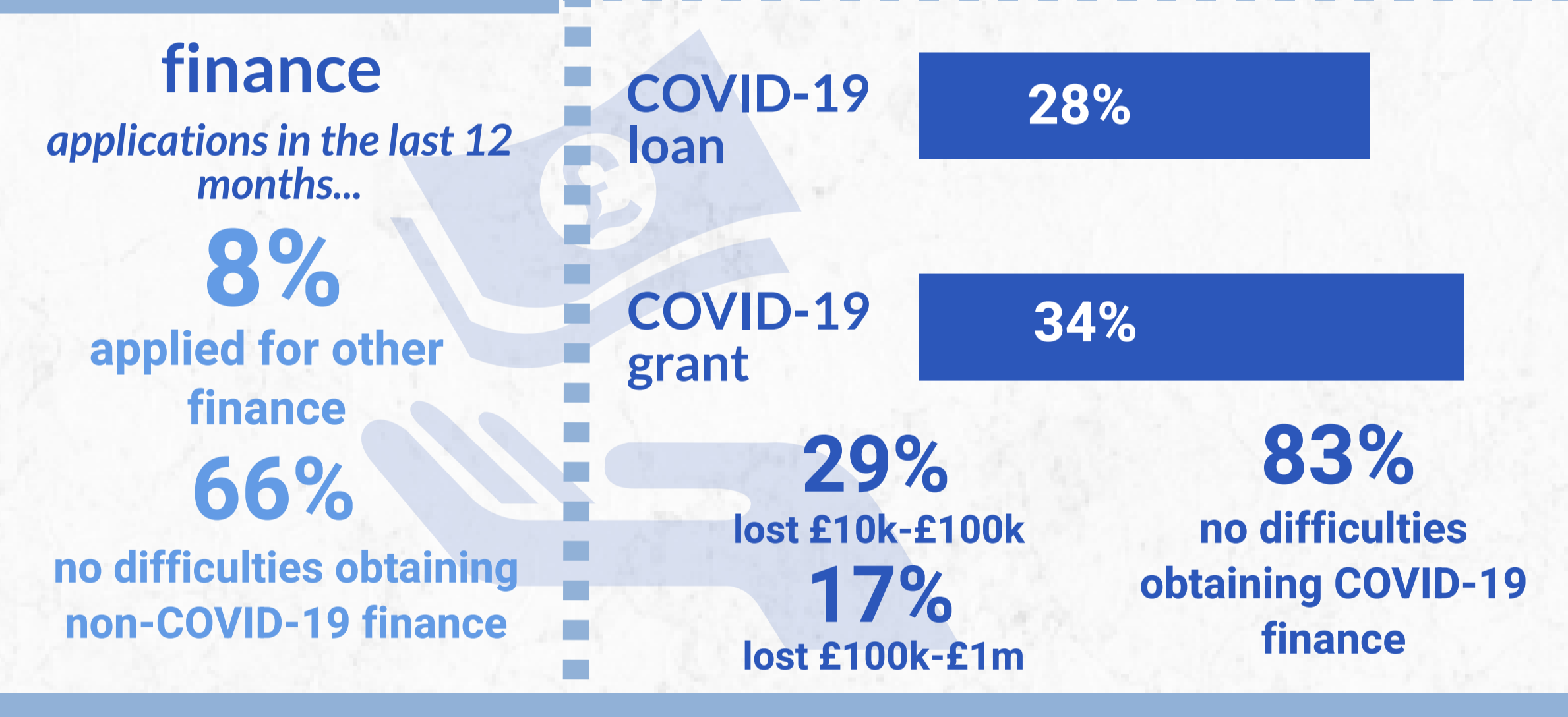
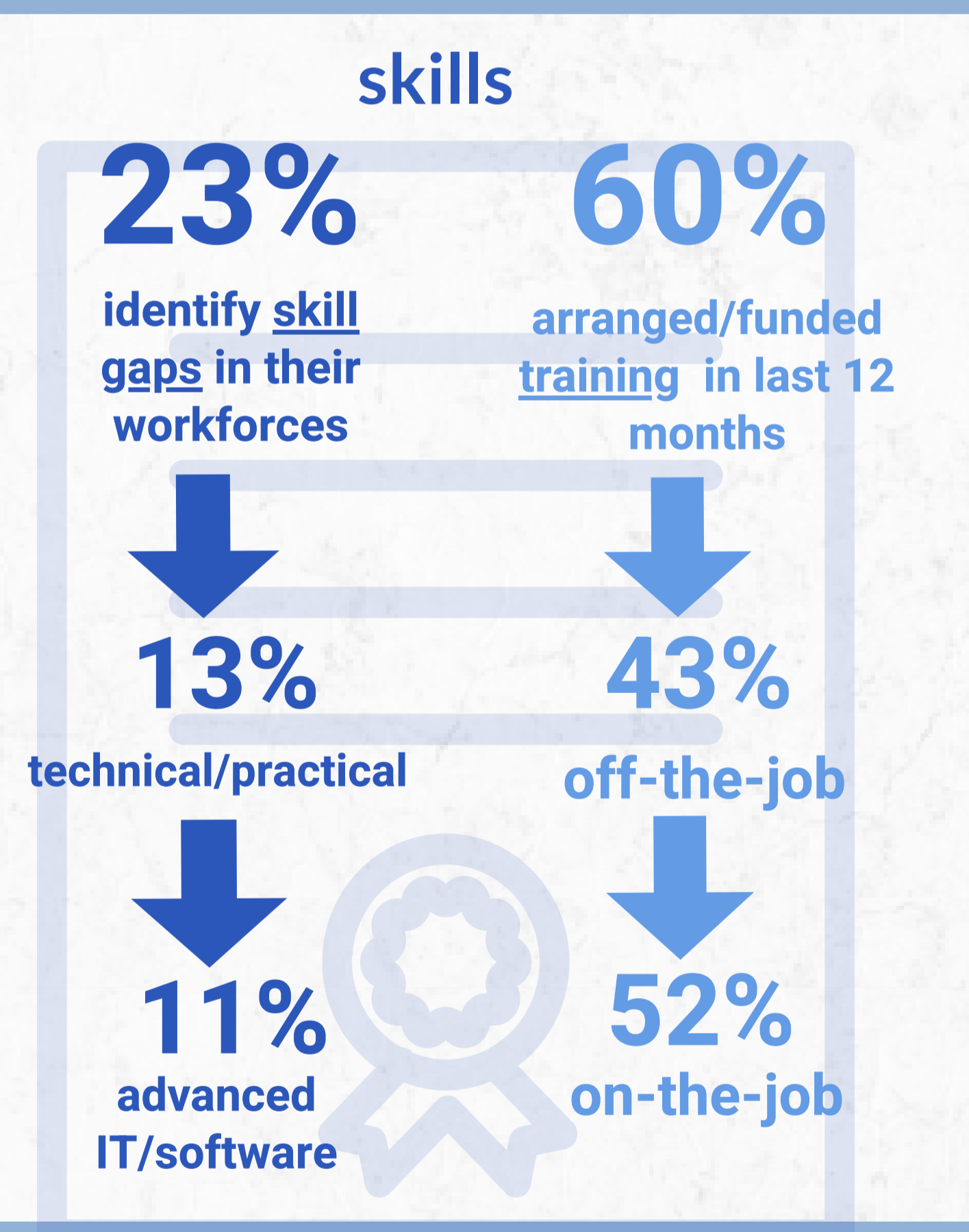
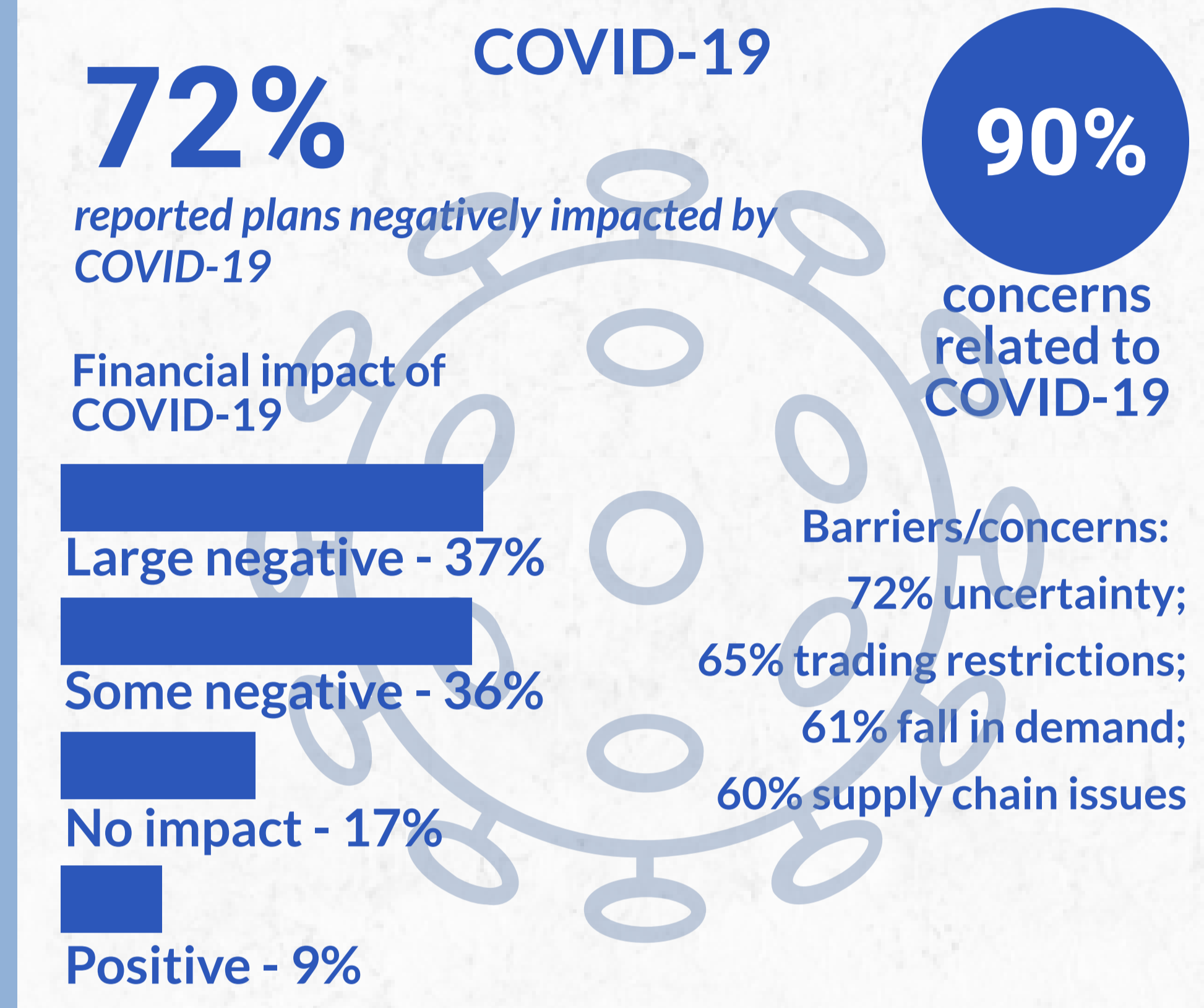
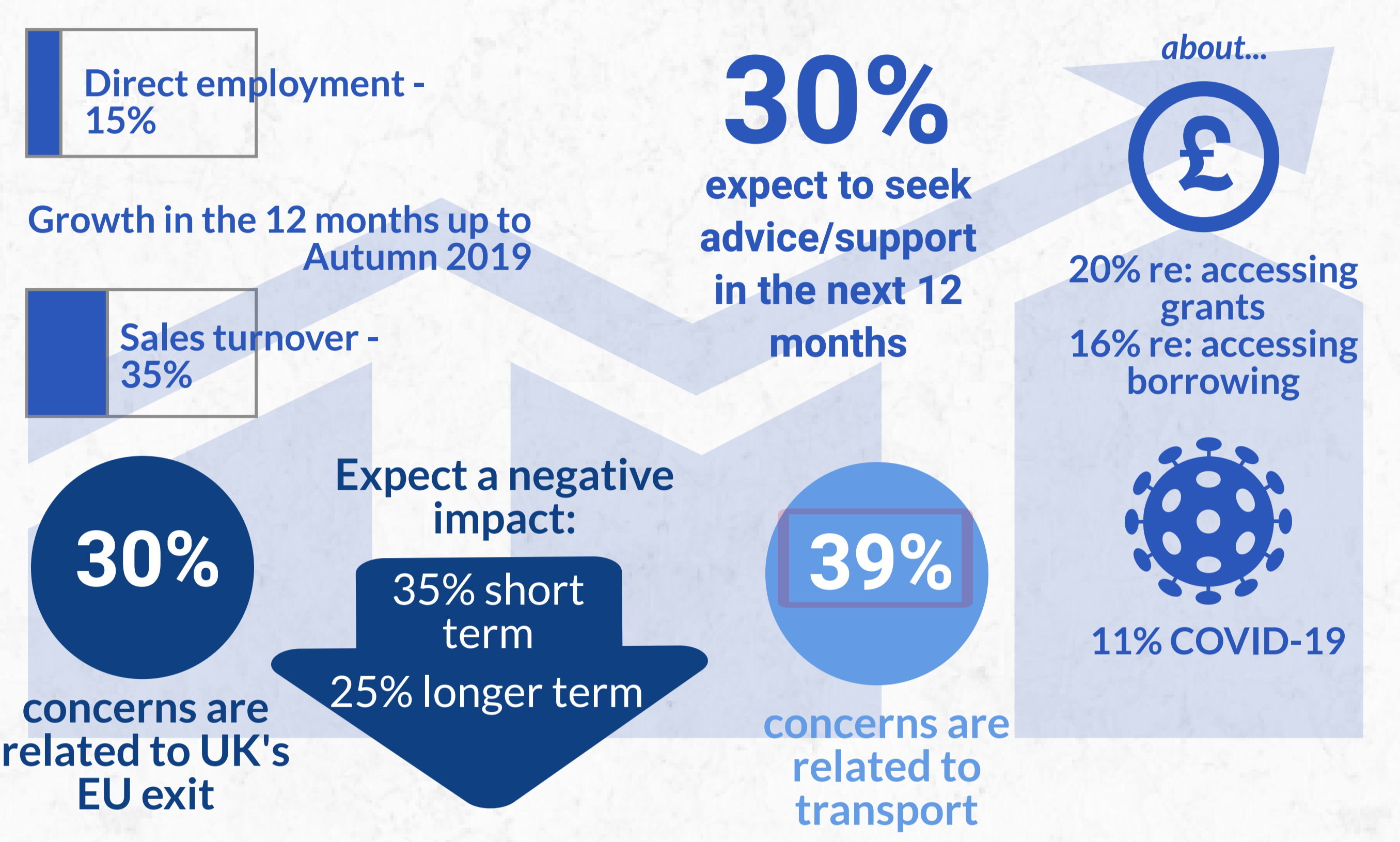
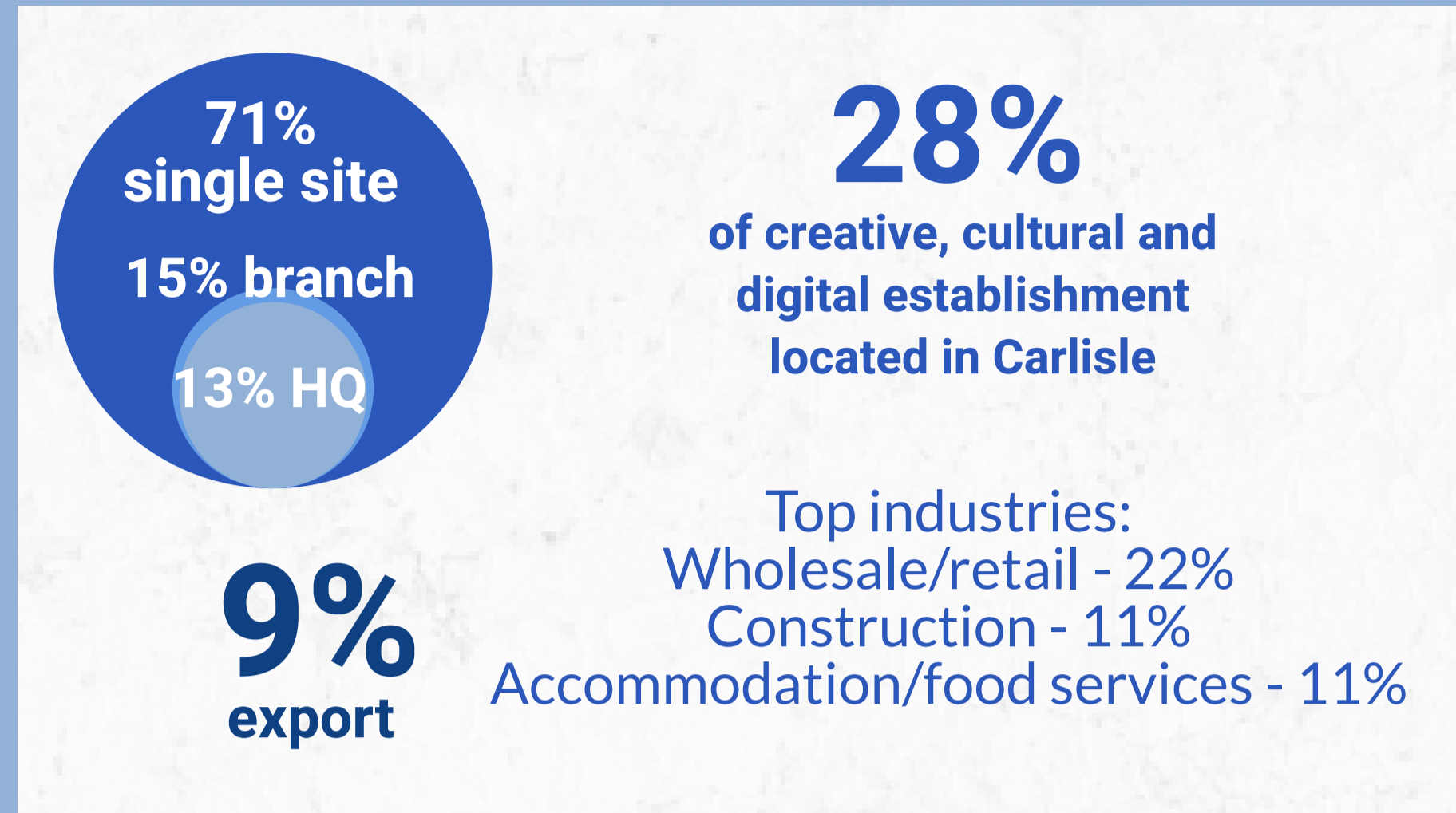
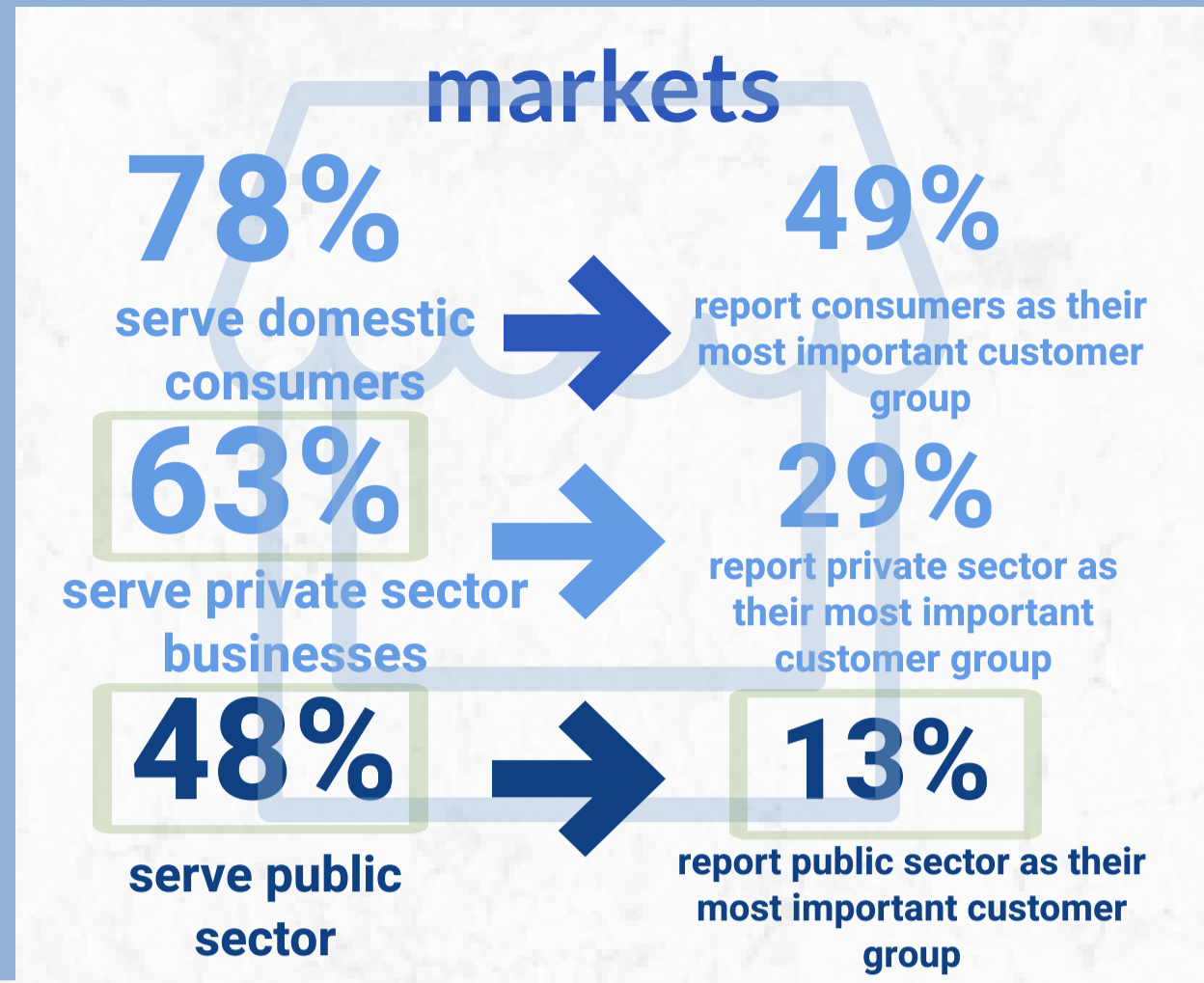
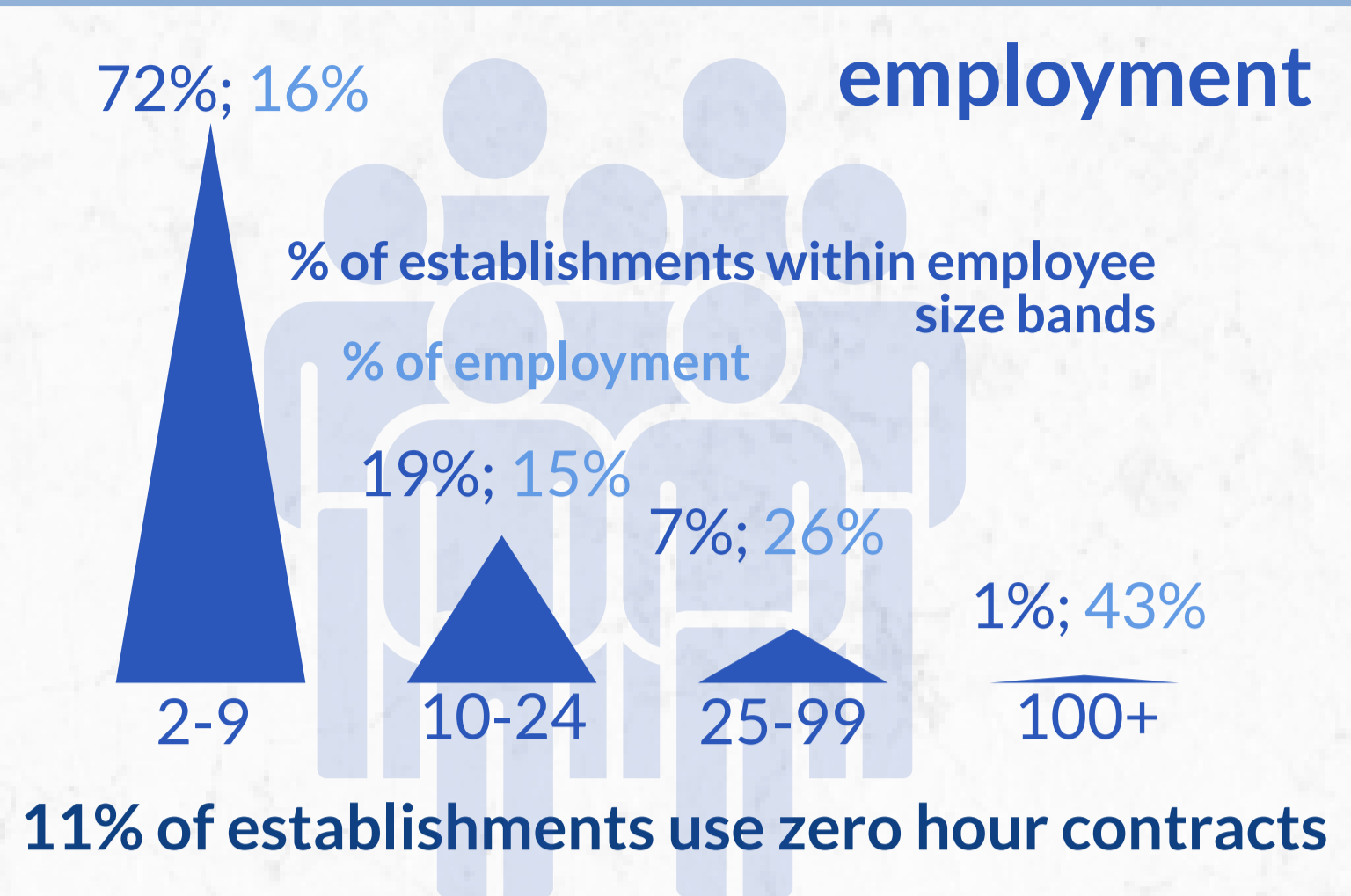


Carlisle Cumbria Business Survey 2020

All establishments located outside the LDNP; 63% in an urban area



Telephone interviews conducted with private and voluntary/non-profit sector employers between October to December 2020 - site level information. Employer population data source: IDBR August 2020

346 surveys completed

Survey commissioned and managed by Cumbria County Council, supported by Cumbria LEP, the 6 district councils in Cumbria and Cumbria Chamber of Commerce

For more information contact: ginny.murphy@cumbria.gov.uk



green shading - above Cumbria average
red shading - below Cumbria average